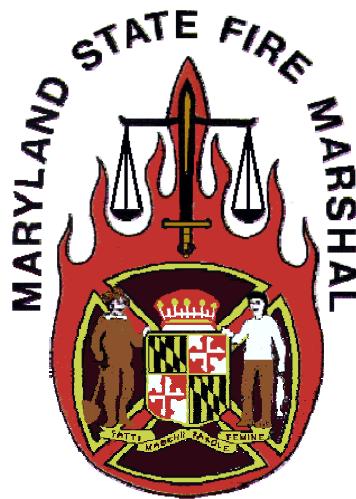


FIRE DEATHS IN MARYLAND



January – December

2005 - 2007

Prepared: January 2008

STATE OF MARYLAND
OFFICE OF THE STATE FIRE MARSHAL
FIRE DEATHS IN MARYLAND
January – December 2007

During CY 2007, there were 66 fatal fires that resulted in 93 deaths in 14 Maryland counties and Baltimore City. Those deaths represent a dramatic 55 percent jump from the 60 deaths that resulted from 56 fatal fires in 2006, a significant 27 percent rise over the 73 deaths in 64 fires reported in 2005, and a six percent increase over the 88 fire deaths in 69 fires reported in 2004.

Twenty-three (23) fatal fires claimed 33 lives in Baltimore City in 2007. Those deaths represent a significant 38 percent increase over the 24 deaths in 21 fires in 2006, a dramatic 65 percent increase over the 20 deaths reported in 2005, and a 10 percent increase over the 30 deaths in 21 fatal fires reported in 2004. There were three multiple-death fires in 2007 that claimed 13 lives, compared to two multiple-death fires in 2006 in which four people died. One smoking-related fire killed eight people, including three adults and five children, while two children and one adult died in an apartment fire that resulted from careless smoking. Two children also died in a fire attributed to an electrical malfunction. There were 21 fatal fires in residential structures in 2007, including three apartment fires.

Baltimore County reported six deaths in as many fires during 2007, one more than the five deaths in as many fires during 2006, but one less than the seven deaths reported in 2005, and equal to the six reported in 2004. Two people died in separate electrical fires in residential structures, one person died in a fire attributed to combustibles too close to a heat source, while careless smoking resulted in an apartment fire that killed a 50-year-old woman. The exact cause of two fires is not yet determined.

Six fire victims died in separate fires reported in Prince George's County during 2007, one more than the five fire victims reported in 2006. Both totals represent a significant decline from the 15 fire victims who died in 11 fires during 2005, and from the 19 fire deaths reported in 2004. Two victims died in separate electrical fires in residential structures including an 8-month-old baby who died in an apartment fire. Separate smoking-related fires resulted in the death of three adults. The exact cause of one fire has yet to be determined.

Montgomery County reported 13 deaths in seven fires in 2007, compare to five deaths in as many fires in 2006, and seven fire deaths in 2005. Three multiple-death residential fires claimed nine lives including one apartment fire attributed to combustibles too close to a heat source in which a mother and three children died, while the causes of the other two fires are not yet determined. Two adults died in separate apartment fires that were determined to be cooking-related.

Nine people died in five fires in Harford County in 2007, compared to no fire deaths reported in 2006 and just one fire death in 2005. One fire claimed the lives of five members of one family, including two adults and three (3) children. One adult died in each of four other fires including one determined to be intentionally set, one smoking-related fire, one electrical fire, and one other accidental fire involving a window air conditioner.

In Worcester County, five people died in three fires, compared to no fire deaths in 2006 and just one in 2005. In 2007, two fires each killed two victims, one fire was heating-related and claimed two children, and the exact cause of the other is not yet determined. The third fatality resulted from a refuse fire in the backyard of a residential structure.

In Wicomico County, four deaths resulted from two fires; one electrical fire in which three people died, and one heating-related residential dwelling fire in which a 97 year-old man died of smoke inhalation.

Four fatal fires in Anne Arundel County led to five deaths including one fire in Annapolis attributed to combustibles too close in which an elderly couple perished. Three other single-death fires included an electrical fire, one fire attributed to misuse of a flammable liquid, and one whose cause is not yet determined. The County reported just one fire death in 2006, and two fire deaths in 2005.

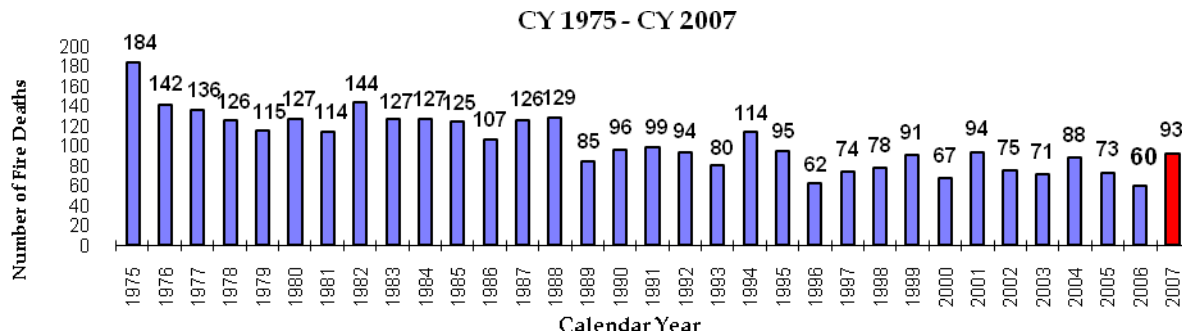
Talbot County reported one smoking-related fire in which three young adults died. These are the first fire fatalities in the county since 2001 when two fire deaths were reported. Howard County also reported three fire deaths in 2007, but in separate fires including one apartment fire originating in the living room, and two fires in single-family dwellings.

Two people died in separate fires in Cecil County including one older woman who died in the fire that resulted from a clothes dryer malfunction, and a younger woman who was the victim of a single-vehicle accident fire. Allegany County reported one fire death resulting from misuse of a flammable liquid in a campfire, while Charles County reported one death in an accidental residential fire. In Frederick County an arson fire claimed the life of the man who set the fire, and a young woman died in a vehicle crash fire in Kent County.

Nine counties suffered no fire deaths in 2007, including Calvert, Caroline, Carroll, Dorchester, Garrett, Queen Anne's, St. Mary's, Somerset, and Washington.

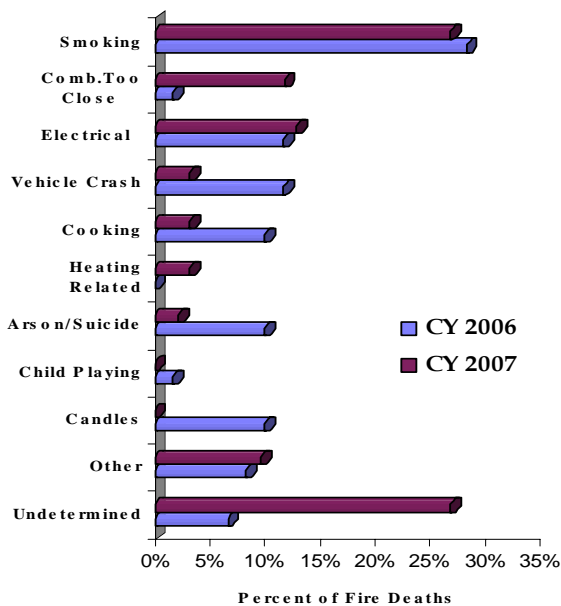
Following is a summary of the fire deaths reported to the State Fire Marshal during January through December 2007. Also included are summary tables of fire deaths for 2005 through 2007. The numbers of fire deaths in Maryland, by county, for the five-year period 2003 through 2007 are listed on Page 10.

Fire deaths in Maryland increased dramatically in 2007 compared to the record low number of fire deaths reported in 2006. Ninety-three (93) people died in the state as the result of 66 fatal fires. Those deaths represent a 55 percent jump from the 60 fire deaths in 56 fires in 2006, a significant 27 percent rise over the 73 fire deaths in 64 fires reported in 2005, and a more modest 6 percent increase over the 88 fire deaths in 69 fires reported in 2004.



In recent years, the numbers of fire fatalities reported to the State Fire Marshal's Office have continued to decline with fire deaths averaging 77 a year from 2003 through 2007. Fire deaths in the State have remained below 100 each year, except one, for the past 19 years, as illustrated in the above graph. During that time, there has been an average of 88 fire deaths a year, while fire fatalities in Maryland averaged 130 a year from 1975 to 1988.

CAUSES OF FATAL FIRES

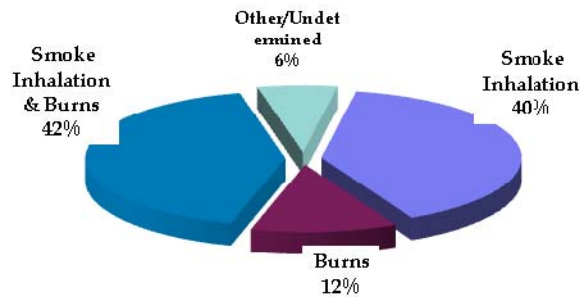


Fatal fires that resulted from careless smoking led to more fire deaths than fires resulting from other causes in 2007. Twenty-five (25) fire victims, ranging in age from 2 to 83 years, died in 14 smoking-related fires, all in residential structures. Smoking-related fire deaths accounted for 27 percent of all fire deaths, compared to 2006 when 17 such deaths accounted for 28 percent of the deaths that year. Again in 2007, the majority of the fatal smoking-related fires occurred in the bedroom or living or family room areas of the home. Five victims died as the result of as many fires that started in the bedroom, while 15 died in six smoking-related fires that originated in the living or family room areas.

Nine fires resulting from various electrical malfunctions led to 12 deaths, compared to six fires resulting in seven deaths in such fires in 2006. Combustibles too close to a heat source resulted in seven fires that claimed 11 lives.

Cooking-related fires in the kitchen killed three adults in separate fires, and two heating-related fires claimed three victims. Two arson fires each claimed one life. The causes of 17 fires in which 25 lives were lost are not yet determined.

CAUSE OF DEATH OF FIRE VICTIMS



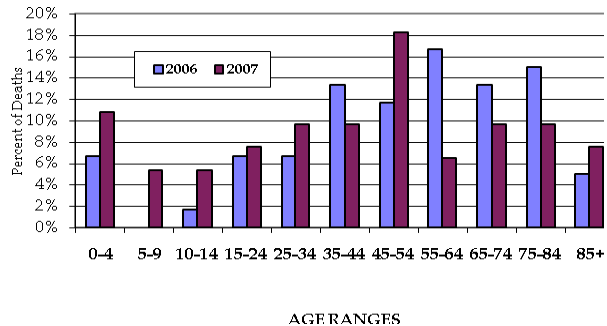
Unlike the past few years, smoke inhalation was the cause of death reported most frequently for victims of fatal fires in 2007, claiming 39 lives.

The combination of smoke inhalation and burns was the cause of death reported for 37 of the 93 fire fatalities 2007.

Eleven (11) fire victims succumbed as the result of burn injuries, which was a significant decline in both absolute and relative numbers from 2006, but comparable to the three years prior to that.

AGE OF FIRE DEATH VICTIMS

Twenty (20) children died in 11 fires during 2007. Fire victims younger than 15 years accounted for almost 22 percent of all fire deaths for the year, a significant increase over the five young victims who accounted for 8.5 percent of all fire deaths in 2006, and eight children who accounted for 11 percent of all fire death victims in 2005.



Three of the children were the only victims of the fires that killed them. There were seven children who died in three smoking-related fires, including a 2 year-old girl who was the only victim of one of those fires. Combustibles too close to a heat source led to the fire that claimed the lives of three very young children and their mother.

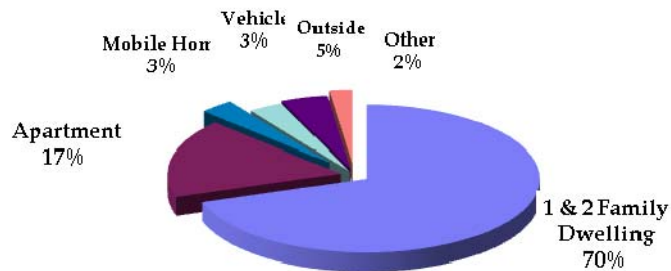
There were 16 victims in the 15 to 34 years age range in 2007, twice the number of victims (8) in that age range reported in 2006. Victims in that age range accounted for over 17 percent of the deaths in 2007, compared to almost 14 percent of the deaths in 2006. Seven of the 25 victims of smoking-related fires fell in this age range, as did two of the victims of vehicle-crash fires.

While the number of fire death victims in the 35 to 64 years age range increased in 2007 compared to 2006, the relative number of deaths declined. Thirty-two (32) victims in that age range accounted for 34.5 percent of the fire deaths in 2007, compared to 25 victims in that age range who represented almost 42 percent of the fire deaths in 2006. Seven of the victims of fires caused by careless smoking fell in this age range, as did two of the three victims of cooking-related fires.

Although the 25 fire-death victims 65 years and older represent a 25 percent increase in the number of deaths compared to the 20 such victims in 2006, the relative proportion of deaths declined. Those victims 65 years and older accounted for 27 percent of the fire deaths during 2007, compared to 33.3 percent of the fire deaths in 2006.

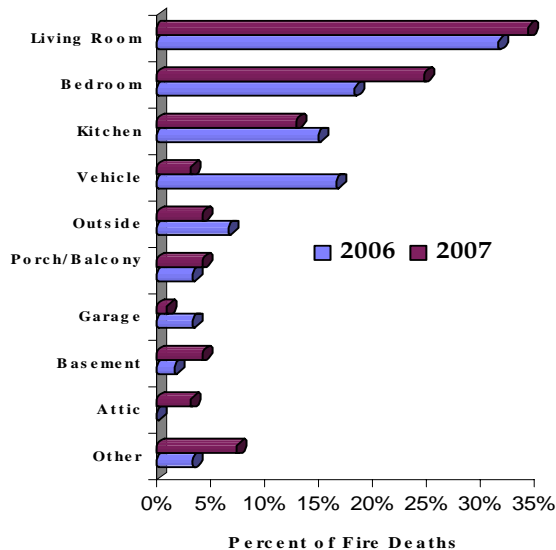
LOCATION OF FATAL FIRES

In 2007, as in other years, most fire deaths occurred in residential structures. Just over 91 percent of the fire deaths were the result of residential fires, including 65 deaths in one and two family dwellings, 16 victims of apartment fires, and three people who died in mobile home fires.



The three vehicle fire deaths resulted from separate vehicle accident fires. The four fire deaths in the Outside category included two people who died in fires resulting from misuse of flammable liquids.

AREA OF FIRE ORIGIN



Thirty-two (32) deaths resulted from 15 fires that started in the living room or family room area of the home in 2007, compared to 19 such deaths in 16 fires in 2006. Almost half (15) of the victims died in six fires caused by careless smoking, while four people died in three electrical fires. One fire attributed to combustibles too close to a heater in the living room claimed two lives.

Twenty-three (23) victims died in 21 fires that originated in the bedroom during 2007, more than double the 11 such victims who died in as many fires during 2006. Careless smoking resulted in seven bedroom fires that claimed the lives of five adults and two young children. Five electrical fires also resulted in the loss of seven lives, and two heating-related fires in the bedroom claimed three lives including a 97 year old man and a 3 year old boy.

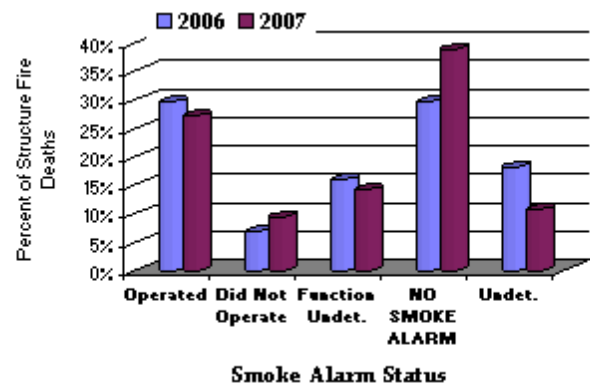
Twelve (12) people died in eight fires that originated in the kitchen area during 2007, compared to nine deaths in the same number of fires in 2006. Cooking-related fires accounted for just three of the kitchen fire deaths, including two in apartment fires. Combustibles too close to a heat source resulted in a kitchen fire that killed a mother and her three children.

SMOKE ALARM PERFORMANCE

Sixteen (16) fatal residential structure fires occurred where the smoke alarms were known to function properly, but the fires still claimed the lives of 23 individuals.

There were no smoke alarms present in 18 fatal structure fires that killed 33 Maryland residents in 2007, including five multiple-death fires in which 20 people died. Those deaths represent a 154 percent increase over 13 such deaths reported in the previous year.

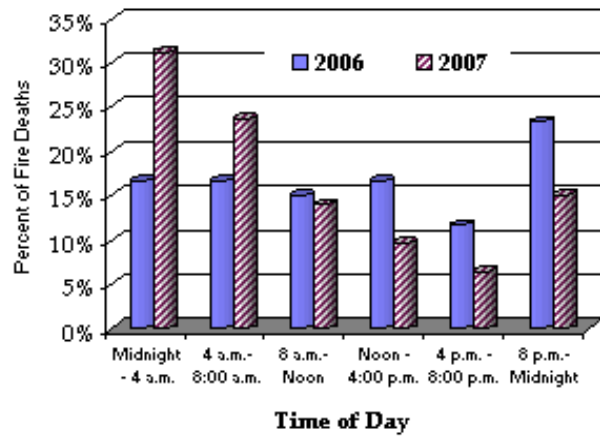
Another 12 people died in structure fires where the smoke alarms were present, but whether or not they operated was not determined.



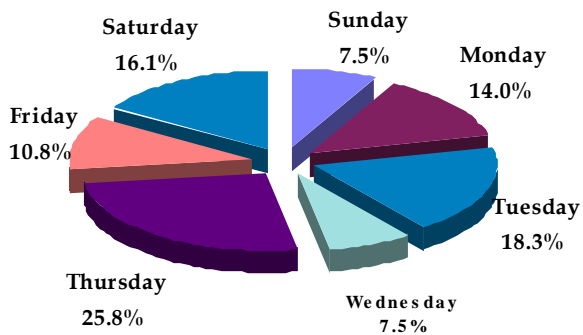
TIME OF FATAL FIRES

Consistent with previous years, more fire deaths occurred in the late night and early morning hours than at other times of the day in 2007.

That pattern changed in 2006, but in 2007 the 30 fatal fires that started between 12 midnight and 8 a.m. resulted in 55 percent of the 93 fire deaths, compared to 33 percent of the 60 fire deaths in 2006. Six multiple-death fires occurred during those hours in 2007. The 14 victims of 12 fires that occurred between 8 p.m. and midnight accounted for an additional 15 percent of all deaths.



DAY OF WEEK OF FATAL FIRES



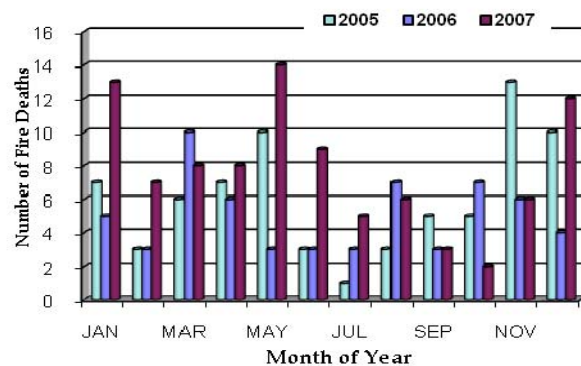
Fatal fires have been more likely to occur over the weekend. However, Thursday, Saturday, and Tuesday proved to be the deadliest three days in 2007.

Over half of the fatal fires occurred during those three days, which resulted in over 60 percent of the 93 fire deaths for the year.

Fifty-six (56) people died from 37 fires that started on those days, including half of the 14 smoking-related fatal fires, and eight multiple-death fires that killed 28 victims.

MONTH OF YEAR

The first three months of the year have often been the busiest months for fatal fires. As illustrated in the adjacent graph, those busy months extended through June in 2007. The majority of the deaths (59), accounting for over 63 percent of all fire deaths, occurred during that time, with January (13) and May (14) being the deadliest. Seven multiple-death fires killed 25 people during the first half of the year. Three multiple-death fires contributed eight deaths to December's total of 12 fire deaths.



**FIRE DEATHS IN MARYLAND
CY 2007**

| COUNTY | FIRE CAUSE | | | | | | | | | | | | FIRE DEATHS | | FATAL FIRES | |
|-----------------------------|------------|------------|------------------|------------|----------|----------|----------|-----------------|-----------------------|---------------|----------|---------------------------|--------------|------------------|-------------|------------------|
| | Smoking | Electrical | Flammable liquid | Child Play | Cooking | Arson | Suicide | Heating related | Combustible too close | Vehicle Crash | Other | Under Invest/Undetermined | Total Deaths | Percent of Total | Total Fires | Percent of Total |
| Allegany | 0 | 0 | 1 | 0 | 0 | 0 | 0 | 0 | 0 | 0 | 0 | 0 | 1 | 1.1% | 1 | 1.5% |
| Anne Arundel | 0 | 1 | 1 | 0 | 0 | 0 | 0 | 0 | 2 | 0 | 0 | 1 | 5 | 5.4% | 4 | 6.1% |
| Baltimore City | 17 | 3 | 0 | 0 | 1 | 0 | 0 | 0 | 4 | 1 | 2 | 5 | 33 | 35.5% | 23 | 34.8% |
| Baltimore Co | 1 | 2 | 0 | 0 | 0 | 0 | 0 | 0 | 1 | 0 | 0 | 2 | 6 | 6.5% | 6 | 9.1% |
| Calvert | 0 | 0 | 0 | 0 | 0 | 0 | 0 | 0 | 0 | 0 | 0 | 0 | 0 | 0.0% | 0 | 0.0% |
| Caroline | 0 | 0 | 0 | 0 | 0 | 0 | 0 | 0 | 0 | 0 | 0 | 0 | 0 | 0.0% | 0 | 0.0% |
| Carroll | 0 | 0 | 0 | 0 | 0 | 0 | 0 | 0 | 0 | 0 | 0 | 0 | 0 | 0.0% | 0 | 0.0% |
| Cecil | 0 | 0 | 0 | 0 | 0 | 0 | 0 | 0 | 0 | 1 | 1 | 0 | 2 | 2.2% | 2 | 3.0% |
| Charles | 0 | 0 | 0 | 0 | 0 | 0 | 0 | 0 | 0 | 0 | 1 | 0 | 1 | 1.1% | 1 | 1.5% |
| Dorchester | 0 | 0 | 0 | 0 | 0 | 0 | 0 | 0 | 0 | 0 | 0 | 0 | 0 | 0.0% | 0 | 0.0% |
| Frederick | 0 | 0 | 0 | 0 | 0 | 1 | 0 | 0 | 0 | 0 | 0 | 0 | 1 | 1.1% | 1 | 1.5% |
| Garrett | 0 | 0 | 0 | 0 | 0 | 0 | 0 | 0 | 0 | 0 | 0 | 0 | 0 | 0.0% | 0 | 0.0% |
| Harford | 1 | 1 | 0 | 0 | 0 | 1 | 0 | 0 | 0 | 0 | 1 | 5 | 9 | 9.7% | 5 | 7.6% |
| Howard | 0 | 0 | 0 | 0 | 0 | 0 | 0 | 0 | 0 | 0 | 0 | 3 | 3 | 3.2% | 3 | 4.5% |
| Kent | 0 | 0 | 0 | 0 | 0 | 0 | 0 | 0 | 0 | 1 | 0 | 0 | 1 | 1.1% | 1 | 1.5% |
| Montgomery | 0 | 0 | 0 | 0 | 2 | 0 | 0 | 0 | 4 | 0 | 1 | 6 | 13 | 14.0% | 7 | 10.6% |
| Prince George's | 3 | 2 | 0 | 0 | 0 | 0 | 0 | 0 | 0 | 0 | 0 | 1 | 6 | 6.5% | 6 | 9.1% |
| Queen Anne's | 0 | 0 | 0 | 0 | 0 | 0 | 0 | 0 | 0 | 0 | 0 | 0 | 0 | 0.0% | 0 | 0.0% |
| St. Mary's | 0 | 0 | 0 | 0 | 0 | 0 | 0 | 0 | 0 | 0 | 0 | 0 | 0 | 0.0% | 0 | 0.0% |
| Somerset | 0 | 0 | 0 | 0 | 0 | 0 | 0 | 0 | 0 | 0 | 0 | 0 | 0 | 0.0% | 0 | 0.0% |
| Talbot | 3 | 0 | 0 | 0 | 0 | 0 | 0 | 0 | 0 | 0 | 0 | 0 | 3 | 3.2% | 1 | 1.5% |
| Washington | 0 | 0 | 0 | 0 | 0 | 0 | 0 | 0 | 0 | 0 | 0 | 0 | 0 | 0.0% | 0 | 0.0% |
| Wicomico | 0 | 3 | 0 | 0 | 0 | 0 | 0 | 1 | 0 | 0 | 0 | 0 | 4 | 4.3% | 2 | 3.0% |
| Worcester | 0 | 0 | 0 | 0 | 0 | 0 | 0 | 2 | 0 | 0 | 1 | 2 | 5 | 5.4% | 3 | 4.5% |
| Total Fire Deaths | 25 | 12 | 2 | 0 | 3 | 2 | 0 | 3 | 11 | 3 | 7 | 25 | 93 | 100% | 66 | 100% |
| Column % of All Fire Deaths | 27% | 13% | 2% | 0% | 3% | 2% | 0% | 3% | 12% | 3% | 8% | 27% | | | | |
| Total Fatal Fires | 14 | 9 | 2 | 0 | 3 | 2 | 0 | 2 | 7 | 3 | 7 | 17 | | | | |
| Column % of All Fatal Fires | 21% | 14% | 3% | 0% | 5% | 3% | 0% | 3% | 11% | 5% | 11% | 26% | | | | |

FATAL FIRES IN MARYLAND CY 2007

| COUNTY | FIRE CAUSE | | | | | | | | | | | | FATAL FIRES | | FIRE DEATHS | |
|--------------------------|------------|------------|------------------|------------|----------|----------|----------|-----------------|-----------------------|---------------|----------|---------------------------|-------------|------------------|--------------|------------------|
| | Smoking | Electrical | Flammable liquid | Child Play | Cooking | Arson | Suicide | Heating related | Combustible too close | Vehicle Crash | Other | Under Invest/Undetermined | Total Fires | Percent of Total | Total Deaths | Percent of Total |
| Allegany | 0 | 0 | 1 | 0 | 0 | 0 | 0 | 0 | 0 | 0 | 0 | 0 | 1 | 1.5% | 1 | 1.1% |
| Anne Arundel | 0 | 1 | 1 | 0 | 0 | 0 | 0 | 0 | 1 | 0 | 0 | 1 | 4 | 6.1% | 5 | 5.4% |
| Baltimore City | 8 | 2 | 0 | 0 | 1 | 0 | 0 | 0 | 4 | 1 | 2 | 5 | 23 | 34.8% | 33 | 35.5% |
| Baltimore County | 1 | 2 | 1 | 0 | 0 | 0 | 0 | 0 | 0 | 0 | 0 | 2 | 6 | 9.1% | 6 | 6.5% |
| Calvert | 0 | 0 | 0 | 0 | 0 | 0 | 0 | 0 | 0 | 0 | 0 | 0 | 0 | 0.0% | 0 | 0.0% |
| Caroline | 0 | 0 | 0 | 0 | 0 | 0 | 0 | 0 | 0 | 0 | 0 | 0 | 0 | 0.0% | 0 | 0.0% |
| Carroll | 0 | 0 | 0 | 0 | 0 | 0 | 0 | 0 | 0 | 0 | 0 | 0 | 0 | 0.0% | 0 | 0.0% |
| Cecil | 0 | 0 | 0 | 0 | 0 | 0 | 0 | 0 | 0 | 1 | 1 | 0 | 2 | 3.0% | 2 | 2.2% |
| Charles | 0 | 0 | 0 | 0 | 0 | 0 | 0 | 0 | 0 | 0 | 1 | 0 | 1 | 1.5% | 1 | 1.1% |
| Dorchester | 0 | 0 | 0 | 0 | 0 | 0 | 0 | 0 | 0 | 0 | 0 | 0 | 0 | 0.0% | 0 | 0.0% |
| Frederick | 0 | 0 | 0 | 0 | 0 | 1 | 0 | 0 | 0 | 0 | 0 | 0 | 1 | 1.5% | 1 | 1.1% |
| Garrett | 0 | 0 | 0 | 0 | 0 | 0 | 0 | 0 | 0 | 0 | 0 | 0 | 0 | 0.0% | 0 | 0.0% |
| Harford | 1 | 1 | 0 | 0 | 0 | 1 | 0 | 0 | 0 | 0 | 1 | 1 | 5 | 7.6% | 9 | 9.7% |
| Howard | 0 | 0 | 0 | 0 | 0 | 0 | 0 | 0 | 0 | 0 | 0 | 3 | 3 | 4.5% | 3 | 3.2% |
| Kent | 0 | 0 | 0 | 0 | 0 | 0 | 0 | 0 | 0 | 1 | 0 | 0 | 1 | 1.5% | 1 | 1.1% |
| Montgomery | 0 | 0 | 0 | 0 | 2 | 0 | 0 | 0 | 1 | 0 | 1 | 3 | 7 | 10.6% | 13 | 14.0% |
| Prince George's | 3 | 2 | 0 | 0 | 0 | 0 | 0 | 0 | 0 | 0 | 0 | 1 | 6 | 9.1% | 6 | 6.5% |
| Queen Anne's | 0 | 0 | 0 | 0 | 0 | 0 | 0 | 0 | 0 | 0 | 0 | 0 | 0 | 0.0% | 0 | 0.0% |
| St. Mary's | 0 | 0 | 0 | 0 | 0 | 0 | 0 | 0 | 0 | 0 | 0 | 0 | 0 | 0.0% | 0 | 0.0% |
| Somerset | 0 | 0 | 0 | 0 | 0 | 0 | 0 | 0 | 0 | 0 | 0 | 0 | 0 | 0.0% | 0 | 0.0% |
| Talbot | 1 | 0 | 0 | 0 | 0 | 0 | 0 | 0 | 0 | 0 | 0 | 0 | 1 | 1.5% | 3 | 3.2% |
| Washington | 0 | 0 | 0 | 0 | 0 | 0 | 0 | 0 | 0 | 0 | 0 | 0 | 0 | 0.0% | 0 | 0.0% |
| Wicomico | 0 | 1 | 0 | 0 | 0 | 0 | 0 | 1 | 0 | 0 | 0 | 0 | 2 | 3.0% | 4 | 4.3% |
| Worcester | 0 | 0 | 0 | 0 | 0 | 0 | 0 | 1 | 0 | 0 | 1 | 1 | 3 | 4.5% | 5 | 5.4% |
| Total Fatal Fires | 14 | 9 | 3 | 0 | 3 | 2 | 0 | 2 | 6 | 3 | 7 | 17 | 66 | 100% | 93 | 100% |
| Column % of Total | 21% | 14% | 5% | 0% | 5% | 3% | 0% | 3% | 9% | 5% | 11% | 26% | | | | |

Office of the State Fire Marshal
FIRE DEATHS IN MARYLAND

| | CY 2005 | | CY 2006 | | CY 2007 | |
|-------------------------|-------------------------|-------------------------|-------------------------|-------------------------|-------------------------|-------------------------|
| FIRE CAUSE | Number of Deaths | Percent of Total | Number of Deaths | Percent of Total | Number of Deaths | Percent of Total |
| Smoking Related | 23 | 31.5% | 17 | 28.3% | 25 | 26.9% |
| Electrical Malfunction | 10 | 13.7% | 7 | 11.7% | 12 | 12.9% |
| Combustibles too close | 2 | 2.7% | 1 | 1.7% | 11 | 11.8% |
| Vehicle Crash | 4 | 5.5% | 7 | 11.7% | 3 | 3.2% |
| Cooking Related | 3 | 4.1% | 6 | 10.0% | 3 | 3.2% |
| Heating Related | 3 | 4.1% | 0 | 0.0% | 3 | 3.2% |
| Arson/Arson Homicide | 6 | 8.2% | 2 | 3.3% | 2 | 2.2% |
| Flammable Liquid Misuse | 0 | 0.0% | 1 | 1.7% | 2 | 2.2% |
| Candles/Incense | 2 | 2.7% | 6 | 10.0% | 0 | 0.0% |
| Suicide | 4 | 5.5% | 4 | 6.7% | 0 | 0.0% |
| Child Playing | 1 | 1.4% | 1 | 1.7% | 0 | 0.0% |
| Mechanical Failure | 0 | 0.0% | 1 | 1.7% | 0 | 0.0% |
| Other | 1 | 1.4% | 3 | 5.0% | 7 | 7.5% |
| Undetermined | 14 | 19.2% | 4 | 6.7% | 25 | 26.9% |
| TOTAL DEATHS | 73 | 100.0% | 60 | 100.0% | 93 | 100.0% |
| *Heating Includes: | | | | | | |
| Kerosene Heater | 0 | | 0 | | 2 | |
| Space/Bsbrd Heater | 2 | | 0 | | 0 | |
| Furnace | 1 | | 0 | | 1 | |
| Faulty Chimney | 0 | | 0 | | 0 | |

| DEATH CAUSE | | | | | | |
|--------------------------|-----------|---------------|-----------|---------------|-----------|---------------|
| Smoke Inhalation & Burns | 40 | 54.8% | 23 | 38.3% | 37 | 39.8% |
| Smoke Inhalation | 22 | 30.1% | 14 | 23.3% | 39 | 41.9% |
| Burns | 10 | 13.7% | 21 | 35.0% | 11 | 11.8% |
| Other | 1 | 1.4% | 2 | 3.3% | 6 | 6.5% |
| TOTAL DEATHS | 73 | 100.0% | 60 | 100.0% | 93 | 100.0% |

| SEX OF VICTIM | | | | | | |
|----------------------|-----------|---------------|-----------|-------|-----------|---------------|
| Male | 48 | 65.8% | 43 | 71.7% | 53 | 57.0% |
| Female | 25 | 34.2% | 17 | 28.3% | 40 | 43.0% |
| TOTAL DEATHS | 73 | 100.0% | 60 | | 93 | 100.0% |

| AGE OF VICTIM | | | | | | |
|----------------------|-----------|---------------|-----------|---------------|-----------|---------------|
| 0 - 4 | 3 | 4.1% | 4 | 6.7% | 10 | 10.8% |
| 5 - 9 | 4 | 5.5% | 0 | 0.0% | 5 | 5.4% |
| 10 - 14 | 1 | 1.4% | 1 | 1.7% | 5 | 5.4% |
| 15 - 24 | 10 | 13.7% | 4 | 6.7% | 7 | 7.5% |
| 25 - 34 | 6 | 8.2% | 4 | 6.7% | 9 | 9.7% |
| 35 - 44 | 7 | 9.6% | 8 | 13.3% | 9 | 9.7% |
| 45 - 54 | 9 | 12.3% | 7 | 11.7% | 17 | 18.3% |
| 55 - 64 | 5 | 6.8% | 10 | 16.7% | 6 | 6.5% |
| 65 - 74 | 5 | 6.8% | 8 | 13.3% | 9 | 9.7% |
| 75 - 84 | 15 | 20.5% | 9 | 15.0% | 9 | 9.7% |
| 85 + | 8 | 11.0% | 3 | 5.0% | 7 | 7.5% |
| Unknown | 0 | 0.0% | 2 | 3.3% | 0 | 0.0% |
| TOTAL DEATHS | 73 | 100.0% | 60 | 100.0% | 93 | 100.0% |

Office of the State Fire Marshal

FIRE DEATHS IN MARYLAND

| LOCATION OF FIRE | CY 2005 | | CY 2006 | | CY 2007 | |
|---------------------------------|------------------|------------------|------------------|------------------|------------------|------------------|
| | Number of Deaths | Percent of Total | Number of Deaths | Percent of Total | Number of Deaths | Percent of Total |
| Home | 52 | 71.2% | 28 | 46.7% | 65 | 69.9% |
| Apartment | 7 | 9.6% | 13 | 21.7% | 16 | 17.2% |
| Mobile Home/Trailer | 1 | 1.4% | 2 | 3.3% | 3 | 3.2% |
| Outside | 4 | 5.5% | 4 | 6.7% | 4 | 4.3% |
| Vehicle | 7 | 9.6% | 10 | 16.7% | 3 | 3.2% |
| Hotel/Rmng House/Nursng Home | 0 | 0.0% | 1 | 1.7% | 1 | 1.1% |
| Store/Warehouse/Manufact/Garage | 1 | 1.4% | 2 | 3.3% | 1 | 1.1% |
| Other | 1 | 1.4% | 0 | 0.0% | 0 | 0.0% |
| TOTAL DEATHS | 73 | 100.0% | 60 | 100.0% | 93 | 100.0% |

| AREA OF FIRE ORIGIN | CY 2005 | | CY 2006 | | CY 2007 | |
|---------------------------------|-----------|---------------|-----------|---------------|-----------|---------------|
| Living Room | 15 | 20.5% | 17 | 28.3% | 31 | 33.3% |
| Bedroom | 21 | 28.8% | 11 | 18.3% | 23 | 24.7% |
| Kitchen | 9 | 12.3% | 9 | 15.0% | 12 | 12.9% |
| Vehicle | 9 | 12.3% | 10 | 16.7% | 3 | 3.2% |
| Outside/Yard | 3 | 4.1% | 4 | 6.7% | 4 | 4.3% |
| Family Room/Den | 3 | 4.1% | 2 | 3.3% | 1 | 1.1% |
| Porch/Balcony/Deck | 1 | 1.4% | 2 | 3.3% | 4 | 4.3% |
| Garage | 0 | 0.0% | 2 | 3.3% | 1 | 1.1% |
| Basement/Utility Room | 4 | 5.5% | 1 | 1.7% | 4 | 4.3% |
| Hallway/Entrance/Foyer/Stairway | 0 | 0.0% | 0 | 0.0% | 1 | 1.1% |
| Attic | 0 | 0.0% | 0 | 0.0% | 3 | 3.2% |
| Bathroom | 0 | 0.0% | 0 | 0.0% | 0 | 0.0% |
| Shop Floor/Equipment Room | 0 | 0.0% | 0 | 0.0% | 1 | 1.1% |
| Other | 8 | 11.0% | 2 | 3.3% | 5 | 5.4% |
| TOTAL DEATHS | 73 | 100.0% | 60 | 100.0% | 93 | 100.0% |

| SMOKE ALARM STATUS IN STRUCTURE FIRES | CY 2005 | | CY 2006 | | CY 2007 | |
|---------------------------------------|-----------|---------------|-----------|---------------|-----------|---------------|
| Present/Operated | 11 | 18.3% | 13 | 29.5% | 23 | 27.1% |
| Present/Did Not Operate | 10 | 16.7% | 3 | 6.8% | 8 | 9.4% |
| Present/Function Undetermined | 21 | 35.0% | 7 | 15.9% | 12 | 14.1% |
| NO DETECTOR PRESENT | 9 | 15.0% | 13 | 29.5% | 33 | 38.8% |
| Undetermined | 9 | 15.0% | 8 | 18.2% | 9 | 10.6% |
| TOTAL STRUCTURE FIRE DEATHS | 60 | 100.0% | 44 | 100.0% | 85 | 100.0% |

Office of the State Fire Marshal

FIRE DEATHS IN MARYLAND

| TIME OF ALARM | CY 2005 | | CY 2006 | | CY 2007 | |
|---------------------|------------------|------------------|------------------|------------------|------------------|------------------|
| | Number of Deaths | Percent of Total | Number of Deaths | Percent of Total | Number of Deaths | Percent of Total |
| 0001 - 0159 | 10 | 13.7% | 3 | 5.0% | 12 | 12.9% |
| 0200 - 0359 | 12 | 16.4% | 7 | 11.7% | 17 | 18.3% |
| 0400 - 0559 | 11 | 15.1% | 5 | 8.3% | 12 | 12.9% |
| 0600 - 0759 | 4 | 5.5% | 5 | 8.3% | 10 | 10.8% |
| 0800 - 0959 | 4 | 5.5% | 4 | 6.7% | 3 | 3.2% |
| 1000 - 1159 | 6 | 8.2% | 5 | 8.3% | 10 | 10.8% |
| 1200 - 1359 | 6 | 8.2% | 7 | 11.7% | 6 | 6.5% |
| 1400 - 1559 | 6 | 8.2% | 3 | 5.0% | 3 | 3.2% |
| 1600 - 1759 | 2 | 2.7% | 4 | 6.7% | 4 | 4.3% |
| 1800 - 1959 | 5 | 6.8% | 3 | 5.0% | 2 | 2.2% |
| 2000 - 2159 | 4 | 5.5% | 9 | 15.0% | 4 | 4.3% |
| 2200 - 2400 | 3 | 4.1% | 5 | 8.3% | 10 | 10.8% |
| TOTAL DEATHS | 73 | 100.0% | 60 | 100.0% | 93 | 100.0% |

| DAY OF WEEK | CY 2005 | | CY 2006 | | CY 2007 | |
|---------------------|-----------|---------------|-----------|---------------|-----------|---------------|
| Sunday | 13 | 17.8% | 16 | 26.7% | 7 | 7.5% |
| Monday | 9 | 12.3% | 9 | 15.0% | 13 | 14.0% |
| Tuesday | 8 | 11.0% | 7 | 11.7% | 17 | 18.3% |
| Wednesday | 9 | 12.3% | 7 | 11.7% | 7 | 7.5% |
| Thursday | 11 | 15.1% | 8 | 13.3% | 24 | 25.8% |
| Friday | 12 | 16.4% | 10 | 16.7% | 10 | 10.8% |
| Saturday | 11 | 15.1% | 3 | 5.0% | 15 | 16.1% |
| TOTAL DEATHS | 73 | 100.0% | 60 | 100.0% | 93 | 100.0% |

| FIRE FATALITIES BY MONTH | CY 2005 | | CY 2006 | | CY 2007 | |
|--------------------------|-----------|---------------|-----------|---------------|-----------|---------------|
| January | 7 | 9.6% | 5 | 8.3% | 13 | 14.0% |
| February | 3 | 4.1% | 3 | 5.0% | 7 | 7.5% |
| March | 6 | 8.2% | 10 | 16.7% | 8 | 8.6% |
| April | 7 | 9.6% | 6 | 10.0% | 8 | 8.6% |
| May | 10 | 13.7% | 3 | 5.0% | 14 | 15.1% |
| June | 3 | 4.1% | 3 | 5.0% | 9 | 9.7% |
| July | 1 | 1.4% | 3 | 5.0% | 5 | 5.4% |
| August | 3 | 4.1% | 7 | 11.7% | 6 | 6.5% |
| September | 5 | 6.8% | 3 | 5.0% | 3 | 3.2% |
| October | 5 | 6.8% | 7 | 11.7% | 2 | 2.2% |
| November | 13 | 17.8% | 6 | 10.0% | 6 | 6.5% |
| December | 10 | 13.7% | 4 | 6.7% | 12 | 12.9% |
| TOTAL DEATHS | 73 | 100.0% | 60 | 100.0% | 93 | 100.0% |

Office of the State Fire Marshal

FIRE DEATHS IN MARYLAND

| COUNTY | CY 2003 | CY 2004 | CY 2005 | CY 2006 | CY 2007 | 5-Year Average | Percent of State Total | FIRE DEATH RATE* |
|--------------------------|-----------|-----------|-----------|-----------|-----------|----------------|------------------------|------------------|
| Allegany | 1 | 0 | 1 | 1 | 1 | 0.8 | 1.0% | 1.1 |
| Anne Arundel | 4 | 12 | 2 | 1 | 5 | 4.8 | 6.2% | 1.0 |
| Baltimore City | 28 | 30 | 20 | 24 | 33 | 27.0 | 35.1% | 4.1 |
| Baltimore County | 9 | 6 | 7 | 5 | 6 | 6.6 | 8.6% | 0.9 |
| Calvert | 0 | 0 | 0 | 2 | 0 | 0.4 | 0.5% | 0.5 |
| Caroline | 1 | 2 | 0 | 5 | 0 | 1.6 | 2.1% | 5.4 |
| Carroll | 0 | 1 | 3 | 3 | 0 | 1.4 | 1.8% | 0.9 |
| Cecil | 2 | 0 | 0 | 1 | 2 | 1.0 | 1.3% | 1.2 |
| Charles | 1 | 1 | 1 | 0 | 1 | 0.8 | 1.0% | 0.7 |
| Dorchester | 0 | 2 | 2 | 1 | 0 | 1.0 | 1.3% | 3.3 |
| Frederick | 0 | 1 | 2 | 2 | 1 | 1.2 | 1.6% | 0.6 |
| Garrett | 0 | 0 | 1 | 0 | 0 | 0.2 | 0.3% | 0.7 |
| Harford | 3 | 2 | 1 | 0 | 9 | 3.0 | 3.9% | 1.4 |
| Howard | 0 | 4 | 0 | 0 | 3 | 1.4 | 1.8% | 0.6 |
| Kent | 0 | 0 | 1 | 0 | 1 | 0.4 | 0.5% | 2.1 |
| Montgomery | 5 | 4 | 7 | 5 | 13 | 6.8 | 8.8% | 0.8 |
| Prince George's | 7 | 19 | 15 | 5 | 6 | 10.4 | 13.5% | 1.3 |
| Queen Anne's | 1 | 0 | 1 | 0 | 0 | 0.4 | 0.5% | 1.0 |
| St. Mary's | 2 | 0 | 2 | 0 | 0 | 0.8 | 1.0% | 0.9 |
| Somerset | 0 | 0 | 2 | 0 | 0 | 0.4 | 0.5% | 1.6 |
| Talbot | 0 | 0 | 0 | 0 | 3 | 0.6 | 0.8% | 1.8 |
| Washington | 5 | 3 | 4 | 2 | 0 | 2.8 | 3.6% | 2.1 |
| Wicomico | 1 | 1 | 0 | 3 | 4 | 1.8 | 2.3% | 2.1 |
| Worcester | 1 | 0 | 1 | 0 | 5 | 1.4 | 1.8% | 3.0 |
| TOTAL FIRE DEATHS | 71 | 88 | 73 | 60 | 93 | 77 | 100.0% | 1.5 |

| | | | | | |
|-------------------|-----|-----|-----|-----|-----|
| FIRE DEATH RATE** | 1.3 | 1.7 | 1.4 | 1.1 | 1.8 |
|-------------------|-----|-----|-----|-----|-----|

*DEATH RATE: Number of civilian fire deaths per 100,000 population

**Rates are based on the 2000 census estimates

NOTES